
USB PC to PC Networking Function

A

USB PC to PC is the best solution for providing the easiest network connection service to you. By connecting multiple PCs through USB PC to PC port, you can build up a local area network without any network adapter. We give this Ethernet emulation environment a name — USB PC to PC. USB PC to PC supports TCP/IP, NetBEUI and IPX protocols. These features make your PCs able to share their resources such as files or printers to each other. Furthermore, USB PC to PC also gives you the ability of connecting to your existing Home or Office LAN for network resource or Internet sharing.

The section includes the following topics:

Installing GeneLink™ LAN Driver	A-2
Using USB PC to PC Networking Function	A-4

Appendix A

Installing GeneLink™ LAN Driver

Before you use the function, you need to install the GeneLink™ LAN Driver to all PCs connected via USB PC to PC cables.

Step 1. Installing driver

1. Insert the driver CD and click “USB PC to PC” button to install the driver.
2. The welcome dialog box appears and click Next > button.
3. Choose the destination folder and click Next > button.
4. Select components that you want to install and then click Next > button.
(GeneLink™ LAN Driver is used only for those PCs connected via USB PC to PC port so that resources are shared between these PCs;
GeneLink™ Software Router allows your PC to connect to another existing Home/Office LAN for network resource or Internet sharing.)
5. The Setup Program will install all necessary components automatically.
6. Setup completes. Then select ‘Yes, I want to restart my computer now’ and click “FInish” button to reboot your computer for updating your driver configuration.

After you complete the installation procedures, you’ll find Setup Program has installed GeneLink™ network driver in your computer. It binds TCP/IP, NetBEUI and IPX protocols to GeneLink™ device.

Step 2 – Connect your PCs via the USB PC to PC cable

Step 3 - Network Login

When you restart your computer, you will be prompted for a user name and password to login your network. Please enter an unique name for your PC.

Step 4 – Sharing your resources and Connecting to Internet

You need to manually share your resources (files, folders, drives and printers) to make them accessible for other computers. For Internet accessing, you must define which computer (That has already been connected to Internet) should install GeneLink™ Software Router. And all clients accessing Internet resources through GeneLink™ USB port should have installed GeneLink™ LAN driver.

USB PC to PC Networking Function

Notice:

1. *You should use the same network protocol (TCP/IP, NetBEUI or IPX) for connecting GeneLink™ LAN to existing Home/Office LAN.*
2. *If you've already configured your [IPX/SPX] and [Client for Netware Networks] before installing GeneLink™ driver, we strongly recommend that you should also install **Software Router** while installing GeneLink™ driver into your system.*

Appendix A

Using USB PC to PC Networking Function

How to share your files, folders, drives and printers

- Go to the file, folder, drive or printer that you want to share.
- Right click your mouse pointer on the resource you want to share, you'll see a POP-UP Menu.



- Select " Sharing" and you'll see another POP-UP Menu.



USB PC to PC Networking Function

- d. In “Sharing” tag, select “Share As”.
- e. Enter a name to help others recognize your sharing file or device (optional).
- f. Select “Access Type”. If you select “ Depend on Password”, your need to assign an access password for this device.
- g. Click “OK” button.

How to check if you have already shared your resources

Go to the resource and check if Windows had added a hand on its icon or not. If yes, it means you’ve successfully shared your resource and others can access it through USB PC to PC; if not, you need to repeat the steps described in “**How to share your files, folders, drives and printers**” to complete your sharing processes.

Connecting to your existing Home or Office LAN

To connect your USB PC to PC to another existing Home or Office LAN via USB PC to PC port, you need to install **GeneLink™ Software Router** in addition to GeneLink™ LAN driver. GeneLink™ Software Router is responsible for handling all network packets between USB PC to PC and your Home/Office LAN. So only the computer that is physically connected to both LANs needs to install GeneLink™ Software Router (i.e., this computer should install both GeneLink™ LAN and one network adapter for Home/Office LAN). For those computers on USB PC to PC, you only need to follow installation procedures on the manual to install GeneLink™ LAN driver. The following procedures will show you how to install drivers to the computer that will link both PC and your existing Home/Office LAN:

Notice: If you want to connect your GeneLink™ LAN to your existing Home/Office LAN, you should use the same protocol for the two LANs. For example, if your Home/Office LAN uses TCP/IP protocol, you should also use TCP/IP protocol for your GeneLink™ LAN. Otherwise, these two LANs cannot communicate to each other. The Setup Program installs TCP/IP, NetBEUI and IPX protocols for GeneLink™ LAN by default. If your Home/Office LAN uses other protocol, please install the same protocol for those computers within GeneLink™ LAN.

Appendix A

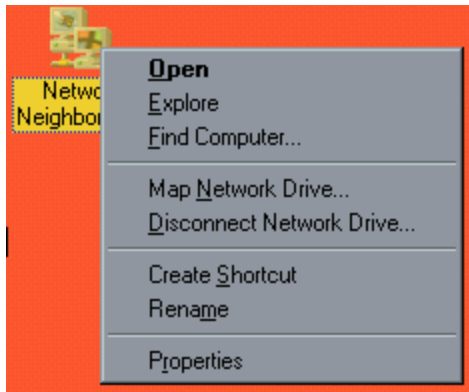
Connecting to Internet through USB PC to PC & Office/Home LAN

If you would like to access Internet resources through USB PC to PC, here are some things you should notice:

- a. You must define which computer should install GeneLink™ Software Router.
- b. The computer which has installed GeneLink™ Software Router should have already been connected to internet.
- c. All clients which would like to access Internet resources through USB cable should have installed GeneLink™ driver.

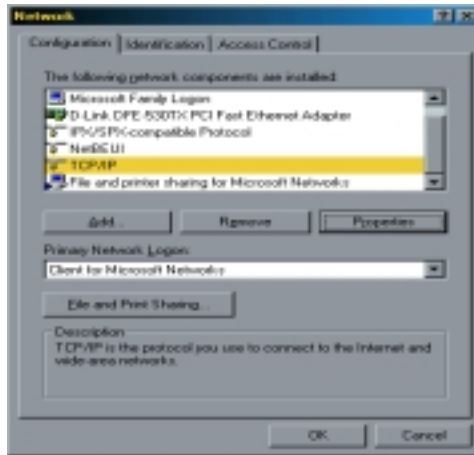
Now we need to make some network configurations on the Desktop/ Notebook which connect to GeneLink™ Software Router to make your Internet access possible (maybe you need to consult you Network Administrator for doing that):

- a. If your existing home/office network is NOT using DHCP to assign client's IP address, your need to:
 - Move your mouse pointer on Network Neighborhood icon and right click on it. You'll see a pop-up menu.



USB PC to PC Networking Function

- Click on “Properties”, you’ll see another menu.



- Choose TCP/IP in Configuration tag, and then press “Properties” button. You’ll see “TCP/IP Properties” menu.



Appendix A

- Now you need to navigate between “IP Address”, “Gateway”, and “DNS Configuration” tags to specify “IP Address”, “Subnet Mask”, “Gateway” and “DNS Server”. If you don’t know their values, please consult your Network Administrator.

- Press “OK” button to go back to “Network” pop-up menu. Choose “Identification” tag. Specify an unique name for your computer if it doesn’t have and fill in the name of your workgroup. If you are not sure what’s the name of your computer or Workgroup, please consult your Network Administrator.



- Press “OK” to complete your network configuration. Restart your computer and you’ll be ready to connect to Internet.

- b. If your existing HOME/OFFICE network is using DHCP to assign client’s IP address, your Network Sever will configure your network configuration automatically. So you can skip those procedures described in the previous session.

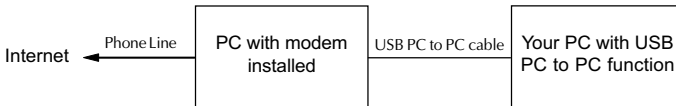
SPECIAL NOTICE for those users who have already installed Network Adapter in their system:

If you've already configured your [IPX/SPX] and [Client for Netware Networks] before installing GeneLink™ driver, we strongly recommend that you should also install **Software Router** when you install GeneLink™ driver into your system. If you decide not to install **Software Router**, then the OS will not allow two IPX/SPX configurations co-exist in the same system. This will cause GeneLink™ Driver Install Program overwrite your original IPX/SPX configuration and make your original network configuration malfunction.

Appendix A

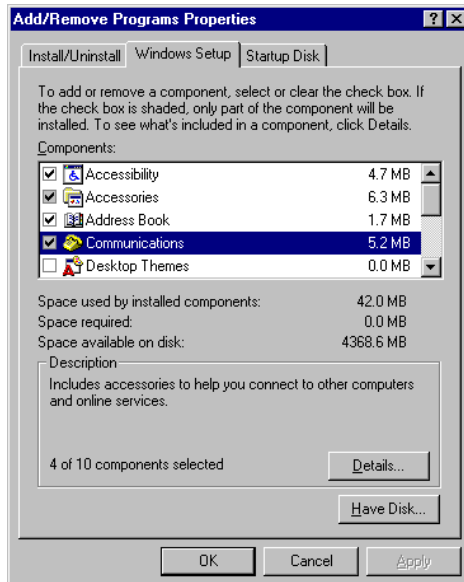
Connecting to internet through USB PC to PC & remote modem

If there is no existing Office/Home LAN and your computer does not have a modem, you still can connect USB PC to PC to internet through another computer with a modem installed. **The function is available in Windows® 98SE and ME.**



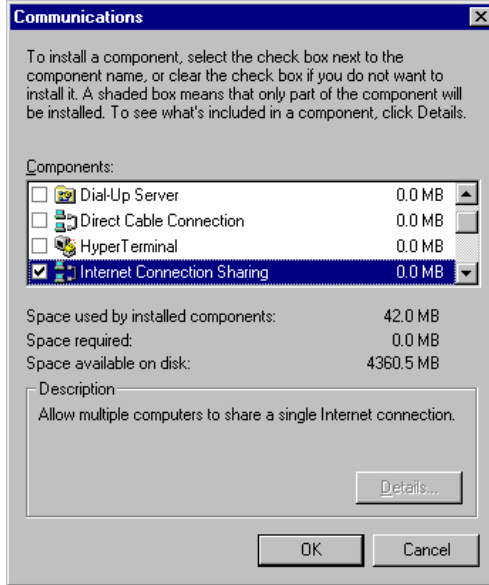
To access internet through another computer with modem, you need to setup “Internet Connection Sharing” on all computers connected via USB PC to PC cables. Instructions are as follows:

- a. Go to “Control Panel”.
- b. Double click “Add/Remove Programs” and the “Add/Remove Programs Properties” window appears.
- c. Select “Windows Setup” tag and double click



USB PC to PC Networking Function

- d. “Communications”. The “Communications” window appears.
- d. Check “Internet Connection Sharing” and click “OK”.

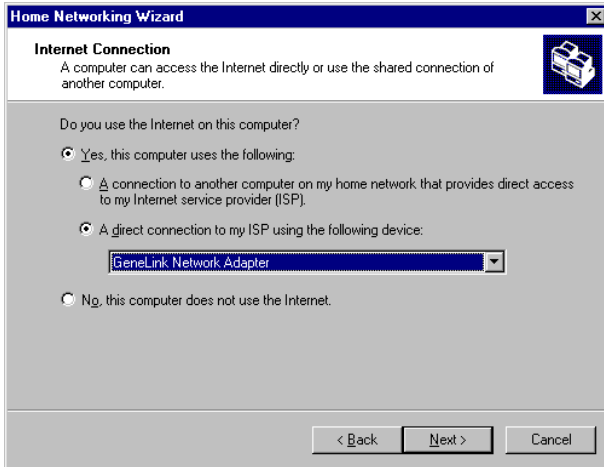


- e. The “Home Networking Wizard” starts. Click “Next”.



Appendix A

- f. Click “A direct connection to my ISP using the following device”, and select “GeneLink Network Adapter” from the pull-down menu. Click “Next”.



Note: For the computer with a modem installed, you need to select “My Connection” instead of “GeneLink Network Adapter” on the step, and after finishing installation of “My Connection”, select “GeneLink Network Adapter” when the above window returns.

- g. Continue to click “Next”.

USB PC to PC Networking Function

- h. Click “Finish.”



- i. Restart the computer.

Note: In Windows® 98SE, you can access internet through the shared connection of another computer, but it is unable for you to control the remote modem. However, in *Windows® ME*, you are allowed to dial the remote modem of another computer using the dialing program built in Windows®.